

EASY CCT SQUARE

Installazione a filo soffitto Surface installation

	EASY CCT 12	EASY CCT 24
Part Number	BPS165MPL12B	BPS290MPL24B
Power (W)	12	24
Input Voltage AC	200÷240	200÷240
Lifespan (h)	25.000	25.000
Protection Rate	IP 20	IP 20
Working Temp.	-20°C/+45°C	-20°C/+45°C
CRI	>80	>80
Installation hole	Ø55÷125mm	Ø55÷250mm

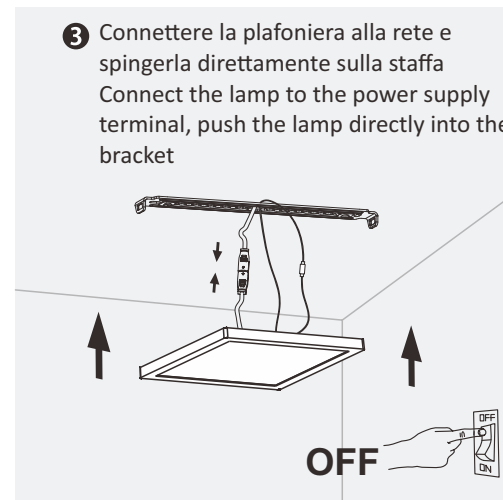
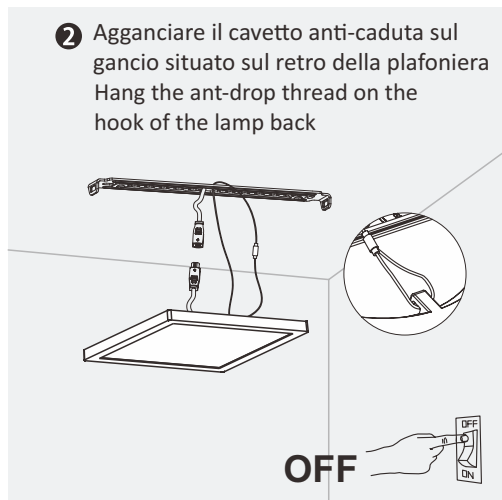
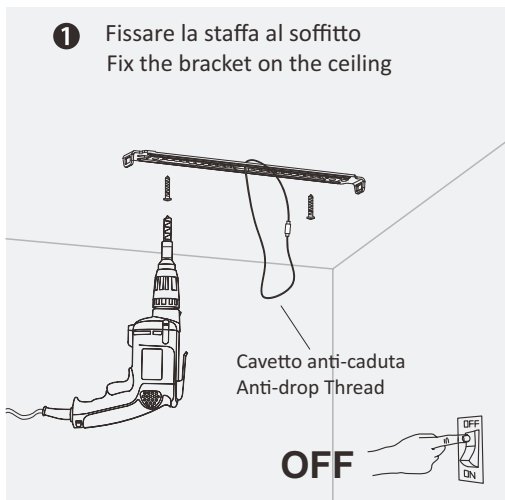
Safety Instructions:

- Switch off before installation
- Non dimmable
- Any product modification expires warranty

Istruzioni per la sicurezza:

- Togliere tensione prima di operare
- Non dimmerabile
- Qualsiasi modifica apportata al prodotto fa decadere la garanzia

CE EMC RoHS



Installazione a incasso Recessed installation

